

# What is JOBST® FarrowWrap®?

## How it Works

How does a JOBST® FarrowWrap® achieve compression?

- Utilising special fabrics
- Manufactured with smart elastic short-stretch bands comprised of multi-layered fabrics
- Amount of band overlap from bottom to top
- Optimal width of bands

It is important that every band of a JOBST® FarrowWrap® garment be applied with moderate stretch. Having a consistent amount of tension throughout the garment helps to ensure graduated compression.

The elastic short-stretch fabrics provide sustained resting compression while also augmenting the calf-muscle pump to deliver high working compression.

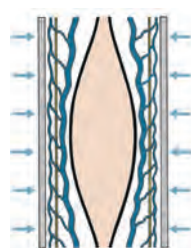
## Benefits

- Easy use of the simple VELCRO® system saves therapist's and patient's time and supports easy donning and doffing for maximal patient independence.
- The product is adjustable, so fluctuating oedema levels can be controlled more easily by the patients themselves - empowering them to control their own care.

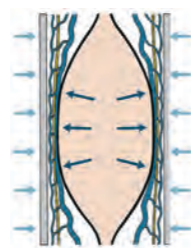


## Characteristics of Short-Stretch Technology

- Allows creation of products with different compression levels at end-stretch
- Provides superior augmentation of the body's natural muscle pump action
- Maximises calf-muscle function
- Minimises swelling throughout the day once garment is donned
- Provides higher compression when the patients stand or are active and less when they are not



The pressure, exerted onto the body from the outside when the muscles are at rest, is called "resting pressure".



The pressure exerted onto the body from the inside as the muscle activates and expands, is called "working pressure"

Short-stretch bandages deliver a low resting pressure and a high working pressure, producing a massage effect on the calf-muscle when the patient is active and producing a subsequent increase in venous and lymphatic return. This makes short-stretch systems very effective in the treatment of chronic oedema.

# The JOBST® FarrowWrap® Product Range

## LITE

### Available variants

- Upper and lower limb
- Ready-to-wear (RTW)

A double laminated fabric suitable for mild to moderate compression needs, making it especially suitable for palliative and paediatric patients. The fabric is both durable and breathable.

- Compression: 20-30 mmHg
- Mild to moderate chronic oedema/lymphoedema

- Conforms to limb shape
- Good choice for patients who have neuropathy or peripheral vascular disease (PVD)
- Recommended for paediatric patients
- Suitable for sensitive skin and as such palliative care patients
- Machine washable and can be tumble dried on low heat

## STRONG

### Available variants

- Lower limb
- Ready-to-wear (RTW)

Premium fabric with strong compression and soft inner layer suitable for patients with a good limb shape and moderate to severe oedema.

- Compression: 30-40 mmHg
- Moderate to severe chronic oedema/lymphoedema with a good limb shape

- Less rigid than CLASSIC
- Contoured bands conform to the limb and resist sliding
- Highly breathable and durable
- Suitable for minor skin folds and distortion
- Material less likely to pill or fray
- Machine washable and can be tumble dried on low heat

## CLASSIC

### Available variants

- Lower limb
- Ready-to-wear (RTW)

The original material that has been clinically proven over many years of use on thousands of patients worldwide. The rigid nature of the material offers performance beyond the compression range making it excellent for patients with moderate to severe compression levels.

- Compression: 30-40 mmHg
- Moderate to severe chronic oedema/lymphoedema

- Suitable for oedema with skin folds and irregular limb shapes
- Durable, rigid fabric with a comfortable feel
- Reinforced spine for easier donning
- Less likely to roll down and will not work into skin folds
- Hand wash only and lay flat to dry